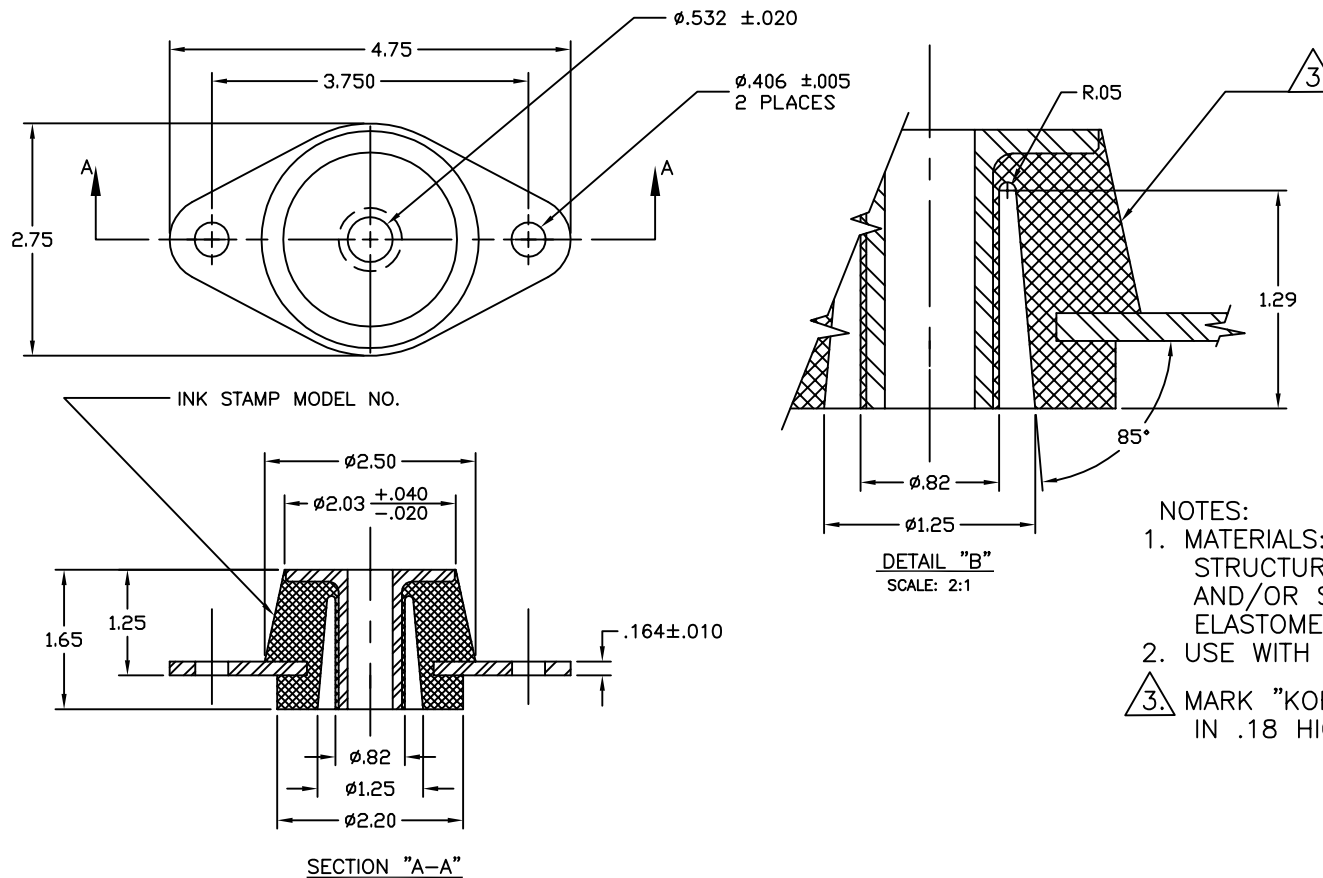


108R-103414 REV.: 2

REV.	DESCRIPTION	DATE	BY

PART NUMBER	MODEL NO.	COMPOUND	DURO	MAX. LOAD	KAXIAL (LB/INS)
770101-01	LRX3-01	RD007 (NITRILE)	70±5	450 LBS	4500±20%



NOTES:

1. MATERIALS:
STRUCTURAL SECTIONS- CARBON STEEL
AND/OR SINTERED METAL
ELASTOMER- NITRILE
2. USE WITH WASHER P/N 148098-1
3. MARK "KORFUND DYNAMICS", EMBOSSED
IN .18 HIGH RAISED LETTERS.

OTHER MATERIALS, COMPOUNDS, OR FINISHES WITH EQUAL OR SUPERIOR
PROPERTIES MAY BE SUBSTITUTED AS THEY BECOME AVAILABLE.

CERTIFIED FOR:

JOB NAME: _____

CUSTOMER: _____

CUSTOMER P.O.: _____

SALES ORDER: _____

MODEL LRX3 450 LBS.
LOW PROFILE
ELASTOMERIC ISOLATOR



THE VMC GROUP
The Power of Together
Bloomington, NJ 07403
Houston, TX 77041

SCALE:

NONE

SHEET:



DRAWING NO.:

REVISION